



Capability Statement



Company Overview

Stuart Burns
Managing Director



dura[®] composites

Unlocking the Power of Composites >>

First established in the United Kingdom in 1996, we are a leading designer, manufacturer and supplier of composite products for industry.

Two-time winners of the prestigious Queens Award for Enterprise, we help companies of all sizes Unlock the Power of Composites through our unique performance-improving products.

Through a combination of design, technology and manufacturing innovations, we have developed a distinct range of walkway grating, trench covers, structural profiles, handrailing, access structures, station platforms and related solutions, known as the d² product range.



Mission

Our mission is to Unlock the Power of Composites™ for industry through our unique d² products, trusted information and inspiring experts. We empower our knowledgeable staff to inspire, educate and problem-solve for customers so they can employ durable, performance-improving and cost-effective solutions.

To help us achieve our strategic vision, we will harness our global network of highly satisfied, passionate and connected customers to drive awareness of Dura as the experts in composite product solutions.



Vision

Solve ambitious infrastructure problems with innovative recyclable products.



Dura Composites Operations Centre

Company Culture

Key to our success is that each of our departments has a clear vision which helps foster a sense of purpose, align efforts and drive innovation.

Specifically, the vision for our People and Culture department is centred around the concept of "Happy people, fuelled by careers that give purpose and feed souls."

This encapsulates our dedication to creating a workplace where employees thrive, finding fulfilment in their professional journey.

Staff are encouraged to develop and grow together to deliver exceptional customer service, guided by the framework of the company's PRIDE values (Purpose, Respect, Innovation, Decisiveness & Encouragement).



Our Core Competencies

We are holders of over 140+ patents and design registrations and have a clear vision to solve ambitious infrastructure problems, sustainably.

The business has grown steadily since our formation in 1996 and we invest significantly to develop our resources, systems and infrastructure to facilitate continued expansion and innovation.

				
25+ Years in business	140+ Patents & unique designs	10+ Global partners	100+ Dedicated staff	\$25m+ USD Sales revenue

Our distinctive d² product range offers superior benefits versus traditional materials in terms of safety, speed of installation and sustainability. Its extensive use across multiple sectors and industries enables the cross pollination of ideas and helps us to work with our clients to solve even the most complex of project challenges.

Our Industries

- Construction
- Rail
- Marine
- Energy
- Utilities
- Defence
- Automotive
- Mining
- Manufacturing
- Retail
- Private & Public Civils
- Stadiums & Arenas
- Leisure
- Healthcare
- Building Remedials

Working in Partnership

Here are just a few of the many companies we work with and supply.

- | | | |
|------------------------|-----------------|----------------------|
| • Network Rail | • Kier | • McNealy Brown |
| • Balfour Beatty | • AmcoGiffen | • J Reddington |
| • Transport for London | • Hammond ecs | • Arena |
| • BAM | • Dyer & Butler | • ES Global |
| • Multiplex | • Abellio | • Travis Perkins |
| • Morgan Sindall | • KCR Ltd | • Hitachi Energy |
| • Sir Robert McAlpine | • Walcon | • Volker Fitzpatrick |
| • Mace | • Opecprime | • Ibstock |
| • Skanska | • OSL Rail | • J Murphy |
| • Galliford Try | • Cairn Cross | • Prowood |
| • Ardmore | • Costain | • Taylor Wimpey |
| • Willmott Dixon | • Cleshar | • Hawksbeck |



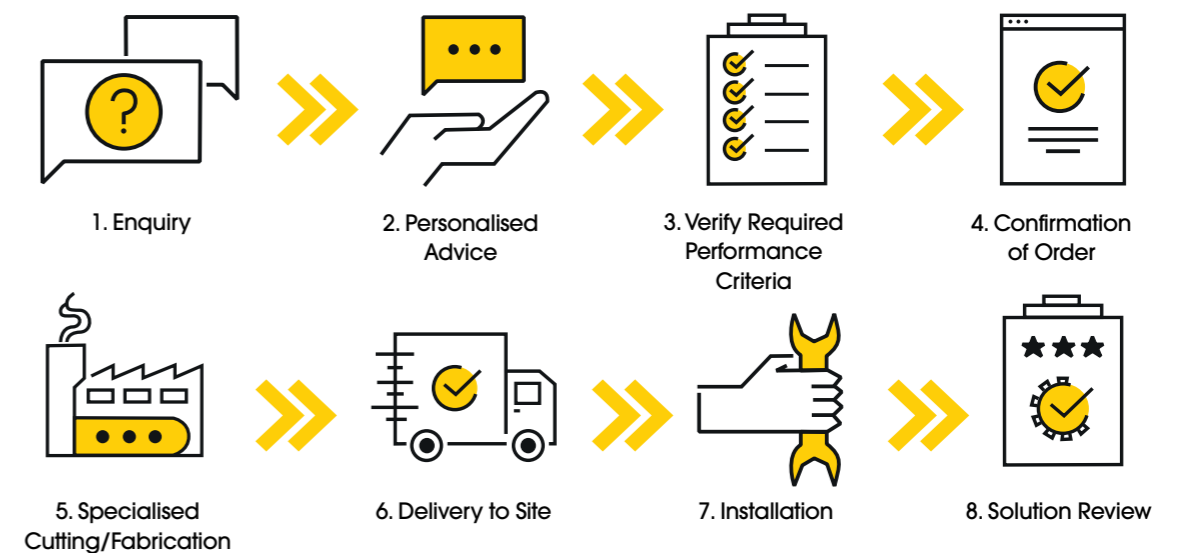


In-House Testing at our Research & Development Centre

The Dura Difference

Our strong Net Promoter Score (NPS) reflects the level of satisfaction and loyalty among our customers. Whilst the typical benchmark for B2B companies is around 30 to 50, our high NPS of +85 is testament to our commitment to consistently delivering exceptional products and services and ensuring a positive customer experience.

Your Process With Us



Our Facilities

We combine our unique and extensive product range with exceptional service from our facilities both in the UK and abroad.

UK Headquarters

Our UK Headquarters is home to our Sales, Marketing, Finance and HR teams as well as our Design and Engineering functions.

Operations Centre

We have extensive warehousing facilities at our Operations Centre where we hold stock of all our popular products, allowing you to "call off" at any time, ensuring you have continuity of supply.

Research & Development Centre

Our Research & Development Centre underpins our position as leaders in the design, manufacture and supply of innovative recyclable composite products and is a key element of our development and growth strategy.

Fabrication Centre

We have extensive knowledge of every aspect of composite fabrications and our first-class fabrication facilities enable us to construct even the most complex projects safely, reliably and to the highest standards. Our fabrication experts use the latest technology, such as computer numerical controlled (CNC) machines, to produce intricate and bespoke designs.

Production Centre

Our Production Centre is home to our specialist cutting and routing team who are highly-skilled in precision cutting of our materials to meet even the most complex of project needs. Our high-specification machinery can cater for scenarios such as non-square or diagonal cuts and acute angles.

Installation Team

Our installation team is made up of entirely permanent team members which enables us to provide continuity of staff to our end clients, so you can get to know your project team, and in turn they can get to know your specific operating environments, ways of working and key project stakeholders.

Value Added Services



3D Laser Scanning Service

Our range of tools and services help unlock the benefit of composite products for architects, engineers, project managers and designers. Through our CAD, Structural Design and Fabrication teams we can help our customers make data-driven decisions about the right product specifications for their projects.

Design

Our Design team use a variety of software including Inventor, Solidworks, Revit, 3Ds Max, Autocad and Navisworks to turn your ideas into reality. Working closely with the fabrication team, they can analyse, design and create bespoke fabrications tailored to your needs. Throughout the project they will be on hand to support you as you need them.

Using our Design team can highlight any mistakes or clashes early on in the design phase and eliminate them before moving to the fabrication or site installation phase.

FEA

If you need structural efficiency gains in your designs we can make it happen using verification and analysis tools such as a Finite Element Analysis (FEA).

Our in-house Structural Engineering Team can support you with design optimisation and failure analysis to analyse the strength of complex structures and systems, determine individual component behaviour, and accurately predict how sections will react under structural and thermal loads.

Engineering

Our computer-aided engineering services utilise a range of analysis tools to simulate the effects of different conditions on our composite products and structures using multiple simulated loads and constraints.

Our CAE tools are also used to analyse and optimise the designs created within CAD software.



Design

Fabrication Drawings

To turn designs into reality once the design is approved, we produce a set of detailed fabrication drawings.

These ensure that each component part is assembled efficiently, cost effectively and to the required performance criteria.

3D Laser Scanning

Our 3D laser scanning service uses the latest area scanning technologies to create an exact 3D replica of your project site or premises.

This can then be utilised by either Dura Composites' in-house designers to recreate your site-specific requirements, or passed to your own internal team.

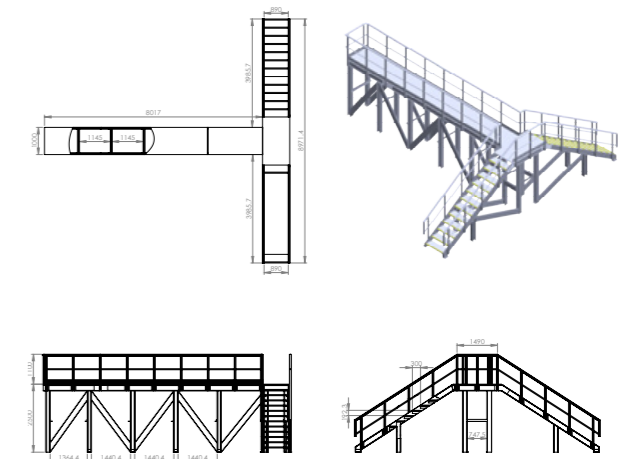
Site Surveys

Our experienced team are available to attend site surveys to assess the detailed requirements of your fabrication project and to supplement and verify the site information provided as part of the initial client brief.

Initial site surveys for particularly tricky or challenging locations can be supplemented with our 3D laser scanning service to create exact measurements.

Photogrammetry

As well as 3D laser scanning, Dura Composites also specialises in photogrammetry 3D mapping using unmanned aerial vehicles (UAVs) or drones. This non-invasive technique allows us to carry out site surveys quickly and safely, with minimal disruption - making linear, point-to-point measurements without the need to manually capture data.



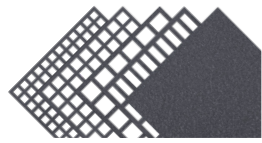
Fabrication Drawings

Our Products

Composites provide significant advantages in construction, primarily due to their compatibility with modern building techniques and their cost-effectiveness during construction and installation.

The range of products on offer from us is vast, from floor walkway grating, fire-rated decking and cladding and industrial handrailing to service risers and trench covers. All products offer customers a low life cycle cost thanks to their long life expectancy and low maintenance requirements.

Core d² Product Ranges



Dura Grating



Dura Pultruded Grating



Dura Slab



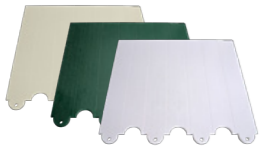
Dura Platform



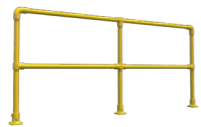
Dura Profile



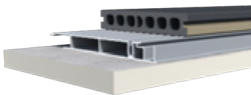
Dura Riser System



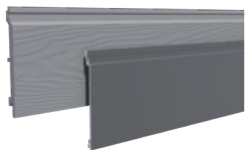
Dura Dagger Board



Dura Key Clamp Handrailing



Dura Deck



Dura Cladding

Product Applications

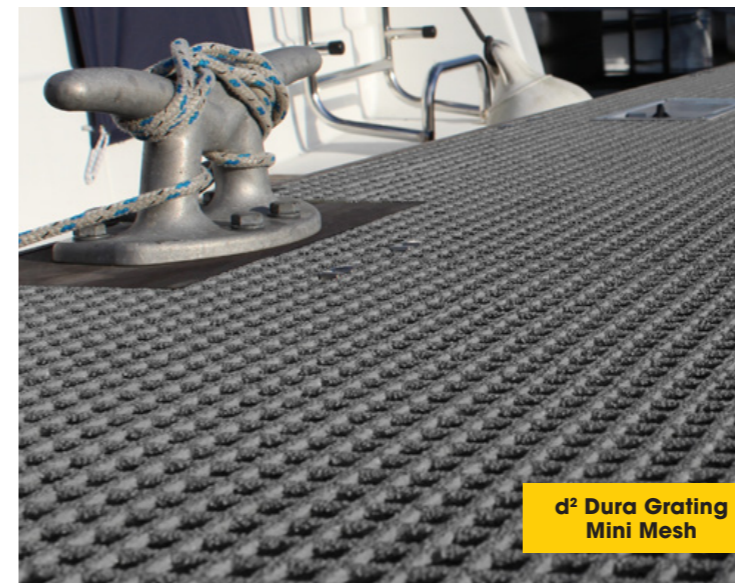
Our products are ideal for (but not limited to):

- Walkways/Raised Flooring
- Structural/Non-Structural Flooring
- Rail Station Platforms/Depots
- Trackside Solutions
- Station Canopies
- Pedestrian Bridges
- Stadium Flooring
- Car Park Flooring
- Service Risers
- Trench Covers/Cable Troughs
- Utility Screening
- Marinas & Pontoons
- Commercial Decking
- Access Structures
- Balcony Decking
- Fire Rated Façades for Buildings



Products
 Our Core

Dura Product Examples



Our Sustainability Priorities

We care about the legacy we leave. That's why we provide market leading recyclable products that enable our customers to make sustainable choices, without compromising on performance or quality. Here are just a few of the ways we're playing our part, to help our customers meet their sustainability goals:

- Sustainable & Ethical Business Priorities
- Decarbonisation
- Circular Economy
- Local Employment
- Charitable Partnerships
- Noise Management
- Environmental Management
- Sustainable Packaging & Waste Management

Our Product Sustainability

GRP

Since the launch of our re-engineered d² Grating in 2019, we've saved over 1.3 million kilograms of raw materials. Comparing this with our former d¹ Grating (or the grating available elsewhere in the industry), d² has led to an amazing saving of nearly 5 million kilograms of CO².

Our products offer considerably low life cycle costs due to their maintenance-free, corrosion-resistant and impact-resistant characteristics compared with traditional materials, and our heavy duty products offer a design life of up to 60 years. Even after they have been used for their intended purpose and reach the end of their lifecycle in the original context, they can easily be up-cycled or repurposed in other ways.

Aluminium

Strong and tough, Dura Deck Aluminium is made from high grade T6 aluminium and is ideal for any application that requires an A2 Fire Rating (A2fl-s1) in accordance with BS EN13501, perfect for applications over 11-metres, such as residential and mixed-use developments, schools, universities, hospitals & libraries. It is 100% recyclable at the end of its life, making it a sustainable and eco-friendly decking option.

Porcelain Decking

A1 Fire-rated Porcelain is exceptionally strong as a material, and therefore has an extremely long lifecycle when compared to other decking solutions such as softwood. Our Dura Deck® Inspire planks are produced in Europe with 61% of pre-consumer recycled materials. All the raw materials used in the production come from a radius of 500 miles of the manufacturing plant and the products' cardboard packaging materials are both made from recycled paper and are further recyclable themselves.



Embodied Carbon

We are committed to providing our customers with the information they need to manage their carbon emissions. Our embodied carbon values for our moulded and pultruded Glass Reinforced Polymer range can be used to help during the planning, materials selection, design, construction and long-term management of your infrastructure.

EPDs

Our Environmental Product Declarations (EPDs) provide clients and specifiers with the product data they need to make informed choices. They are transparent, objective reports that communicate how our GRP products impact the environment across their lifecycle.

If you would like to access our Environmental Product Declarations (EPDs) or Embodied Carbon reports, please visit our website at www.duracomposites.com/sustainability.





Safety

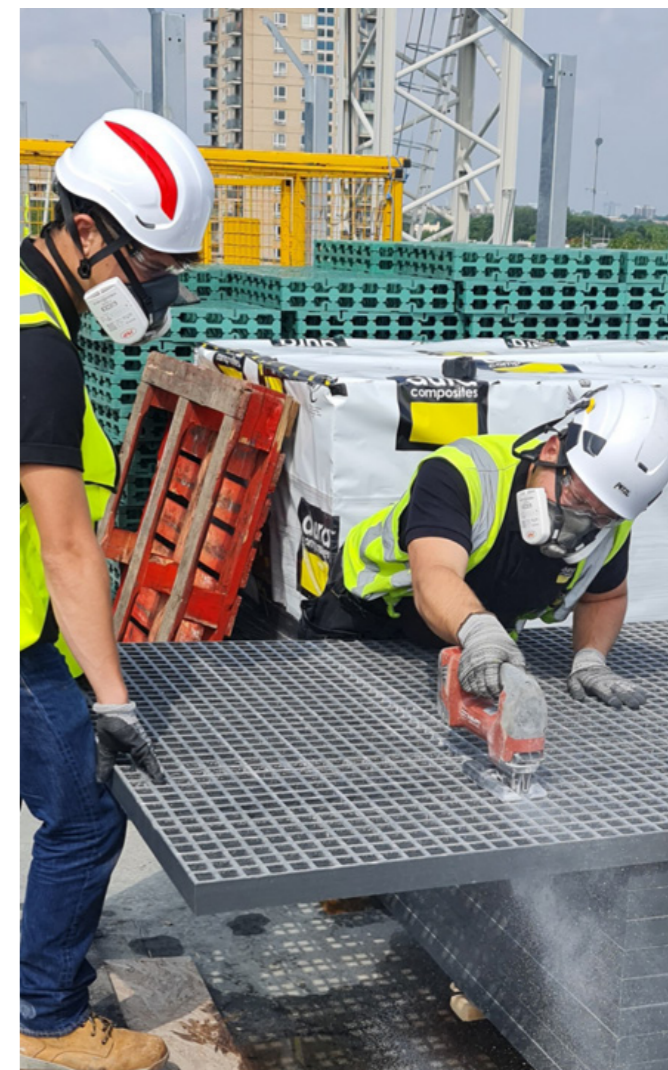
Health and safety is paramount within the sectors in which we operate, for all employees and visitors on-site, as well as everybody involved with the install of our products.



We are holders of a GOLD award from the Royal Society for the Prevention of Accidents (RoSPA) in recognition of our commitment to overarching occupational health and safety management systems which include practices such as leadership and workforce involvement.

We have also established a Safety, Health and Environment (SHE) Committee which works to identify potential hazards, risks, and safety issues in our workplace and develop plans and procedures to mitigate or eliminate those risks. It also promotes a safety culture amongst Dura Composites employees and serves as a platform for employees to raise safety-related concerns.

On site, our Installation team is committed to maintaining health and safety standards across all of its working environments. We invest in specialist health and safety training for all our staff, and our GRP installation operatives are IPAF and PASMA qualified.



Quality & Compliance



We are ISO 9001 certified - a quality management system that helps us continually monitor and manage quality in order to achieve, as well as benchmark, consistently high performance and service.

We are also pleased to have achieved the internationally recognised ISO 14001 certification, the standard that specifies criterion for an effective environmental management system. Awarded by NQA, the ISO 14001 quality mark is aimed at enhancing the environmental performance of Dura Composites by controlling the company's impact on the environment as well as reducing resource use and improving overall efficiency.

In addition we are proud to also be accredited by many international specialist construction associations that ensure our clients have complete confidence in receiving the highest levels of service, quality and standards compliance.

Accreditations, Awards & Certifications

As global leaders in multiple industries, we strive for excellence, we care about the environment and the impact we leave, and we are continuously innovating and improving our products, services and practices.

If you would like to see the full list of our Awards & Accreditations, visit www.duracomposites.com/accreditations.



Our Global Reach



Better Transport Options Than Ever Before

We're now able to offer a dedicated delivery service using our own Dura- branded vehicles with their recognisable YES number plates.

Benefits include:

- Faster Delivery Times
- Consistent Service Quality From Permanent Staff
- Real Time Tracking + Our Drivers Call Ahead With ETAs
- Lorry-Mounted Cranes for Smooth Offloading
- Reduced Risk of Damage or Loss
- Less Environmental Impact
- Meets Latest Safety Standards
- Dedicated Transport Customer Care Line



Partnerships

We believe in championing new and disruptive innovation which can bring transformational change to the industry. Our partnerships and joint ventures include:

Mekina Industries



Our joint venture partnership with Mekina Industries empowers them in their aim to lead the way in GRP construction products such as permanent formwork, copers, and custom mouldings. With a track record of delivering excellence, the Mekina team have worked on over 4000 projects worldwide.

Orange Train Wash



Empowered by Dura Composites, the Orange Train Wash is manufactured using our sustainable d² range of safer, stronger, faster and proven GRP components. Able to clean one train carriage every 30 seconds, the Orange Train Wash revolutionises how train exteriors are maintained with trailblazing cleanliness standards and radical environmental, carbon reduction, installation, productivity and cost saving benefits.



Headquartered in the UK, we have a presence across the globe through our partnerships on every continent. If your projects are outside the UK please either get in touch with our distributors and partners below or send us an enquiry via the website.

United Kingdom

Dura Composites Ltd

Dura House, Telford Road
Clacton On Sea
Essex, CO15 4LP

T: +44 (0) 1255 423601
E: info@duracomposites.co.uk

Northern Ireland

Ridgeway

103 Airport Road West
Belfast
County Down, BT3 9ED

T: +44 (0) 28 9045 4599
E: info@ridgeway-online.com

Republic of Ireland

Ridgeway

Ratoat Road
Ashbourne
County Meath, A84 XD98

T: +353 (01) 802 7171
E: info@ridgeway-online.com

Australia

Dura Composites Australia

154 Mitchell Ave, Kurri Kurri,
NSW, Australia, 2327

T: +61 1300 253 227 - Option 10
E: sales@duracomposites.com

Middle East

Bahrain

4K Building Materials

Ground Floor, Building 283
Street 12 Tibli, Block 701
Bahrain

T: +973 (0) 17704706
E: info@4kbm.com

Qatar

4K Qatar

4K Qatar WLL
PO Box 5187, Doha, Qatar

T: +974 (0) 4460 4104
E: info@4kqatar.com

Invicta GRP Systems

B1-A7, Warehouse 12
GWC Logistics Park
Al Wukair
PO Box 23276, Doha, Qatar

T: +974 441 4340
E: enquiries@durasteel.net

Kuwait

Synthetic Wood

Synthetic Wood LLC, Shop No.7
Building 1473, Block 1
Al Rai Industrial Area
Kuwait City

T: +965 2474 7794
E: syntheticwood@gmail.com

Lebanon

SilverDeco Studio

SilverDeco Studio (part of 4K Group)
Missirian Building - 1st Floor
Horsh Tabet Main Road
Sin El Fil, Beirut

T: +961 1 501515
E: info@silverdeco.com

UAE (Dubai)

Invicta GRP Systems

Suite 1406 - 14th Floor
The Metropolis, Business Bay
PO Box 127626, Dubai, UAE

T: +971 55 391 4507
E: sarun.vs@invictagrpsystems.com

UAE (Abu Dhabi)

Invicta GRP Systems

Office M2 - Al Mujahid Building
10th Street
Old Mazda Road
PO Box 63297, Abu Dhabi, UAE

T: +971 55 391 4507
E: sarun.vs@invictagrpsystems.com

Saudi Arabia

4K Building Materials

King Abdul Aziz Street
Al Amamrah, Dammam
Saudi Arabia

T: +966 (0) 138642814
E: info@4kbm.com

Invicta Arabia Company Ltd.

8076 Al Jabal St.
4197 Al Dana District
35514 Al Jubail,
Saudi Arabia

T: +971 55 391 4507
E: sarun.vs@invictagrpsystems.com



Our Project
Case Studies



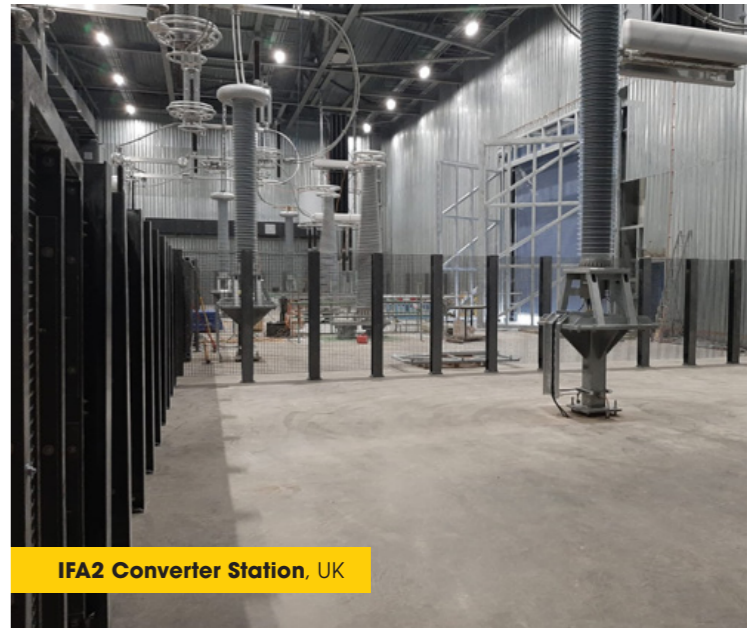
Robroyston Station, Scotland



Chelsea Flower Show, London



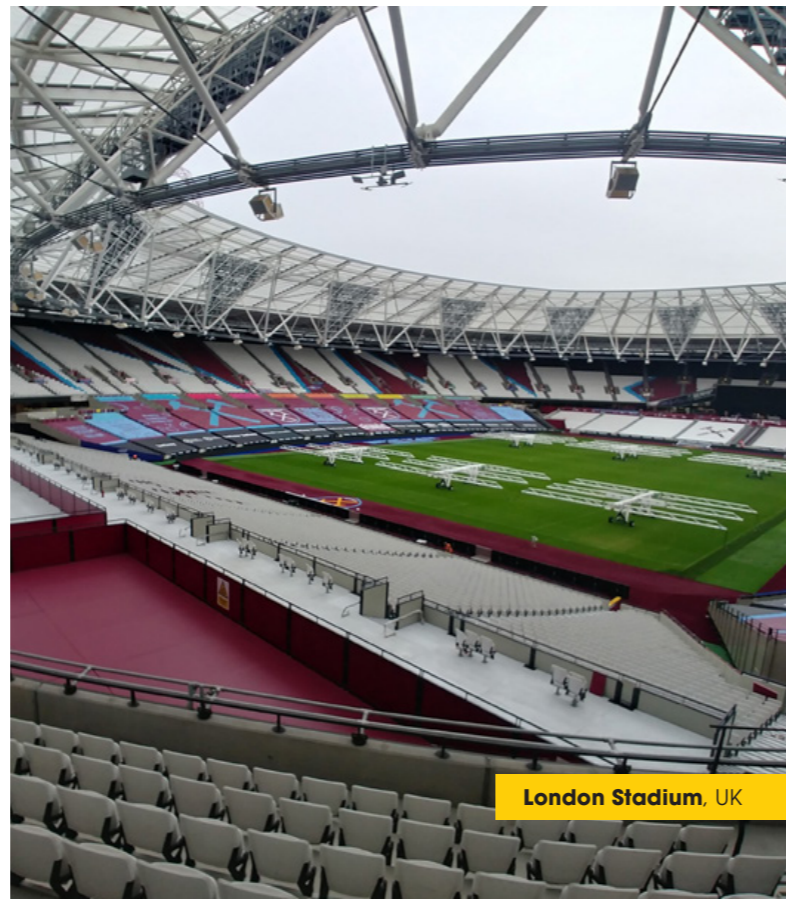
Shepperton Marina, Middlesex



IFA2 Converter Station, UK



25 Cannon Street, London



London Stadium, UK



Palm Jumeirah Marina, UAE

Head Office

Dura Composites Ltd
Dura House, Telford Road,
Clacton On Sea,
Essex, CO15 4LP
United Kingdom

Tel: +44 (0)1255 423601
Email: info@duracomposites.com

www.duracomposites.com

duraTM
composites

Unlocking the Power of Composites™ >>

